

**Dupont Road
Raynes Park, SW20 8EH**

£950,000 Freehold

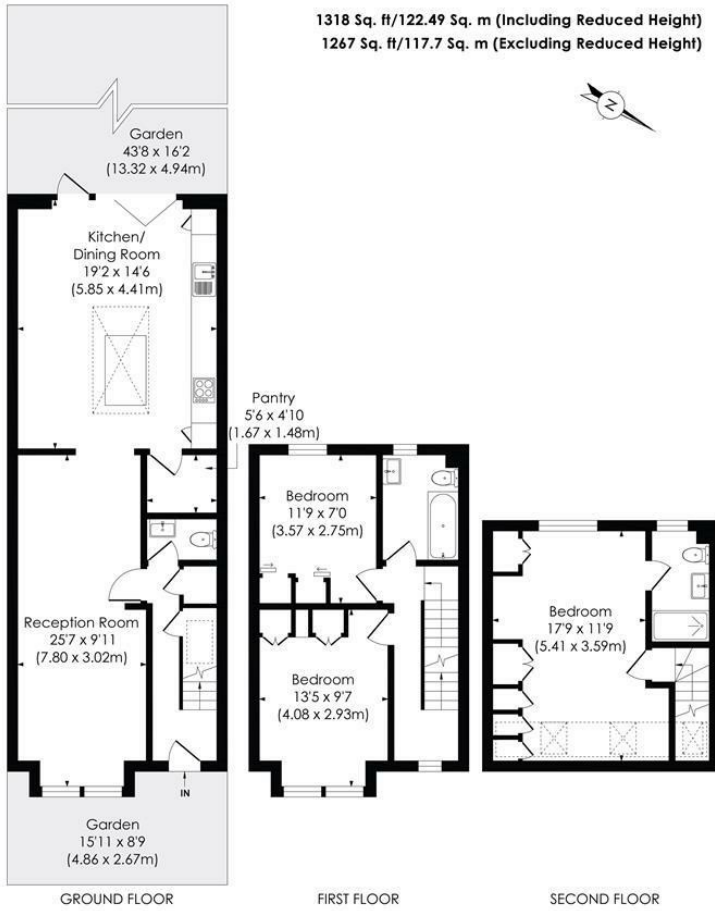


DUPONT ROAD, SW20

Approx. Gross Internal Floor Area

1318 Sq. ft/122.49 Sq. m (Including Reduced Height)

1267 Sq. ft/117.7 Sq. m (Excluding Reduced Height)



© Pixangle Property Marketing Ltd. info@pixangle.com Tel: 0208 870 2118
 This floor plan has been prepared for the purpose of illustration only in accordance with the latest RICS code of measuring practice and is not to scale. All measurements and areas are approximate and whilst every effort has been made to ensure the accuracy of the plan contained here, no responsibility is taken for any error, omission or misstatement.

- 1,667 sqft - Three Double Bedroom - Two Bathroom
- Stunning 6m Rear Extended Kitchen/Dining Room
- Large West Facing Garden And Attractive Brick Front
- Spacious Principal Bedroom With En Suite
- Downstairs W.C And Ample Hall Storage
- Larger Than Average Reception Room
- 0.4 Miles To Raynes Park Station And High Street
- 0.4 Miles To Wimbledon Chase Station And Shops
- EPC - D
- Council Tax Band - E

Energy Efficiency Rating		Current	Possible
Very energy efficient - lower running costs			
A	(91-100)		
B	(81-90)		
C	(69-80)		
D	(55-68)	63	84
E	(39-54)		
F	(21-38)		
G	(1-20)		
Not energy efficient - higher running costs			
England & Wales		EU Directive 2002/91/EC	

For Free Mortgage Quote and Best Mortgage Rates, call Ellisons Mortgage Advisor on 0208 944 9595



Although these particulars are believed to be correct, their accuracy is not guaranteed and they do not form part of any contract.

Celebrating 30 years of successful Sales and Lettings in Merton

